

100-140 W.GRAND RIVER AVE. 341-345 EVERGREEN AVE.

EAST LANSING, MI

OWNER

100 GRAND RIVER LLC.
341 EVERGREEN LLC.

ARCHITECT

SOLOMON CORDWELL BUENZ
IN CONSULTATION WITH GARY L. KOHN, ARCHITECT
625 N. MICHIGAN AVE, CHICAGO, IL 60611

CIVIL ENGINEER

KEBS INC.
2116 HASLETT ROAD, MI 48840

LANDSCAPE ARCHITECT

DANIEL WEINBACH & PARTNERS, LTD.
53 WEST JACKSON BLVD, SUITE 250 CHICAGO, IL 60604

ISSUED FOR SUP/SITE PLAN FILLING

06.13.2018





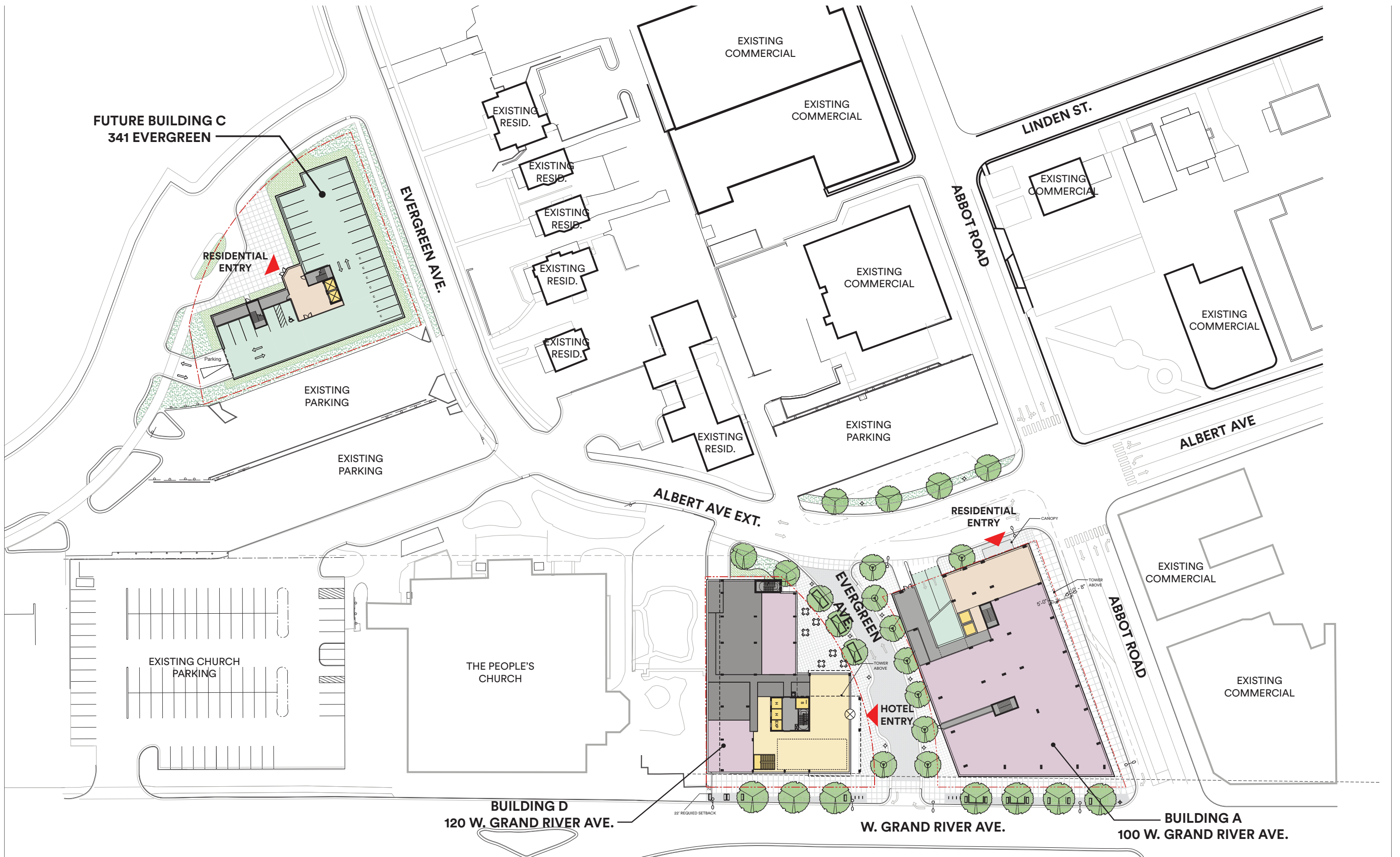
PROPOSED OVERALL SITE LANDSCAPE PLAN
100-140 W.GRAND RIVER & 341-345 EVERGREEN, EAST LANSING, MI
 100 GRAND RIVER LLC / 341 EVERGREEN LLC

06/13/2018

2016029



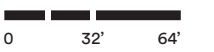
0 32' 64'
 L-001



PROPOSED OVERALL SITE PLAN
100-140 W. GRAND RIVER & 341-345 EVERGREEN, EAST LANSING, MI
 100 GRAND RIVER LLC / 341 EVERGREEN LLC

06/13/2018

2016029



0 32' 64'



A-003



THE PEOPLE'S CHURCH

EXISTING PARKING

EVERGREEN AVE.

BIKE LANE

ALBERT AVE

RESIDENTIAL ENTRY

CANOPY

EXISTING COMMERCIAL

ABBOT ROAD

EXISTING COMMERCIAL

EVERGREEN AVE.

TOWER ABOVE

HOTEL ENTRY

5'-0"

10'-8"

22' REQUIRED SETBACK

BUILDING D

BUILDING D PROPERTY LINE

BUILDING A PROPERTY LINE

BUILDING A

W GRAND RIVER AVE.

120 W GRAND RIVER AVE.

100 W GRAND RIVER AVE.

- PARKING
- RESIDENTIAL LOBBY
- RETAIL
- STAIRS / B.O.H.
- CIRCULATION
- HOTEL LOBBY



PROPOSED BUILDING A & D GROUND FLOOR PLAN
 100-140 W. GRAND RIVER & 341-345 EVERGREEN, EAST LANSING, MI
 100 GRAND RIVER LLC / 341 EVERGREEN LLC

06/13/2018

0 8' 16'

2016029

A-004



RENDERING - AERIAL VIEW LOOKING NORTHEAST
100-140 W.GRAND RIVER & 341-345 EVERGREEN, EAST LANSING, MI
100 GRAND RIVER LLC / 341 EVERGREEN LLC

06/13/2018

2016029

A-007

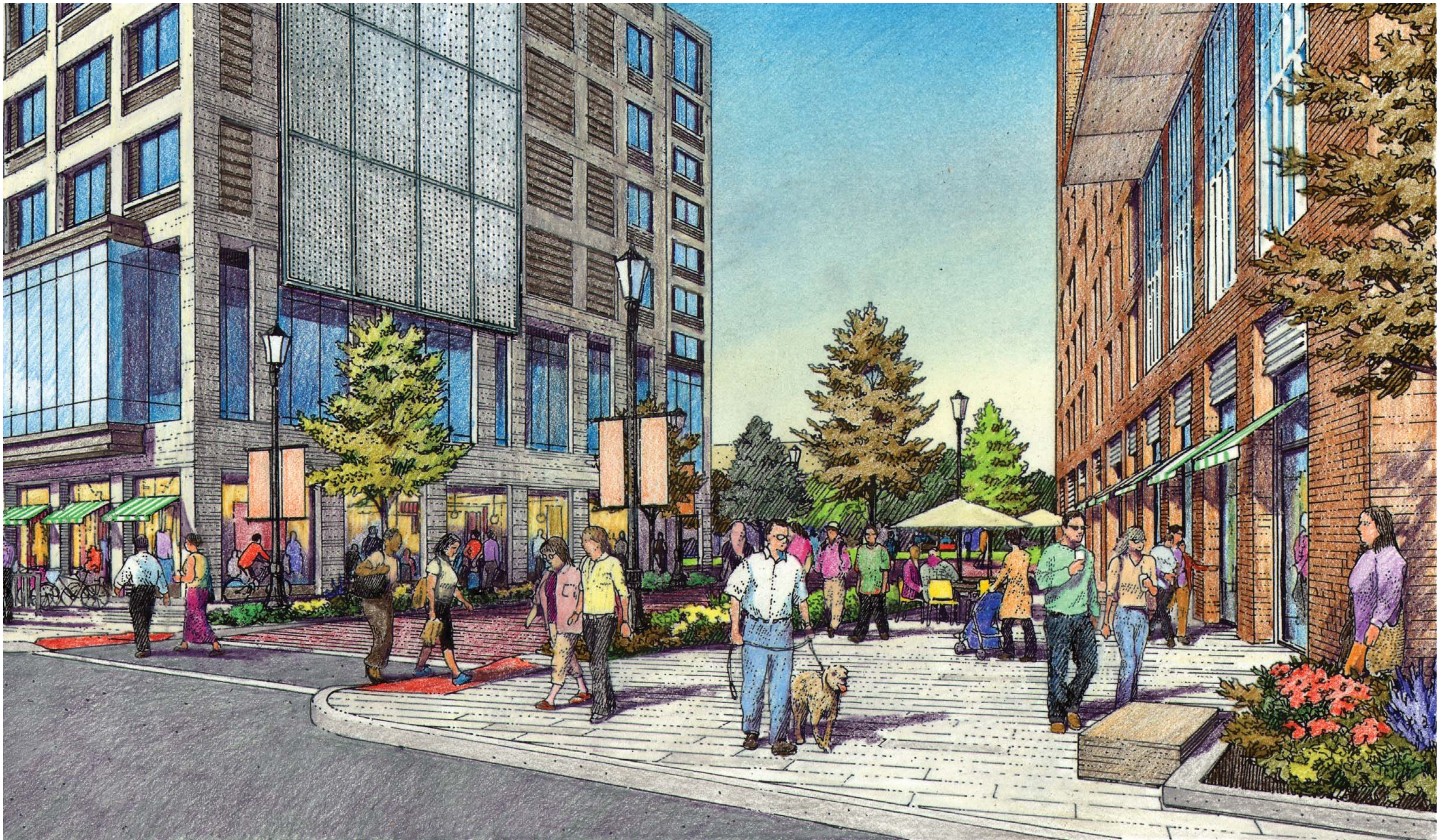


RENDERING - AERIAL VIEW LOOKING NORTHWEST
100-140 W.GRAND RIVER & 341-345 EVERGREEN, EAST LANSING, MI
100 GRAND RIVER LLC / 341 EVERGREEN LLC

06/13/2018

2016029

A-008



RENDERING - VIEW FROM GRAND RIVER LOOKING NORTH

100-140 W. GRAND RIVER & 341-345 EVERGREEN, EAST LANSING, MI
100 GRAND RIVER LLC / 341 EVERGREEN LLC

06/13/2018

2016029

A-009



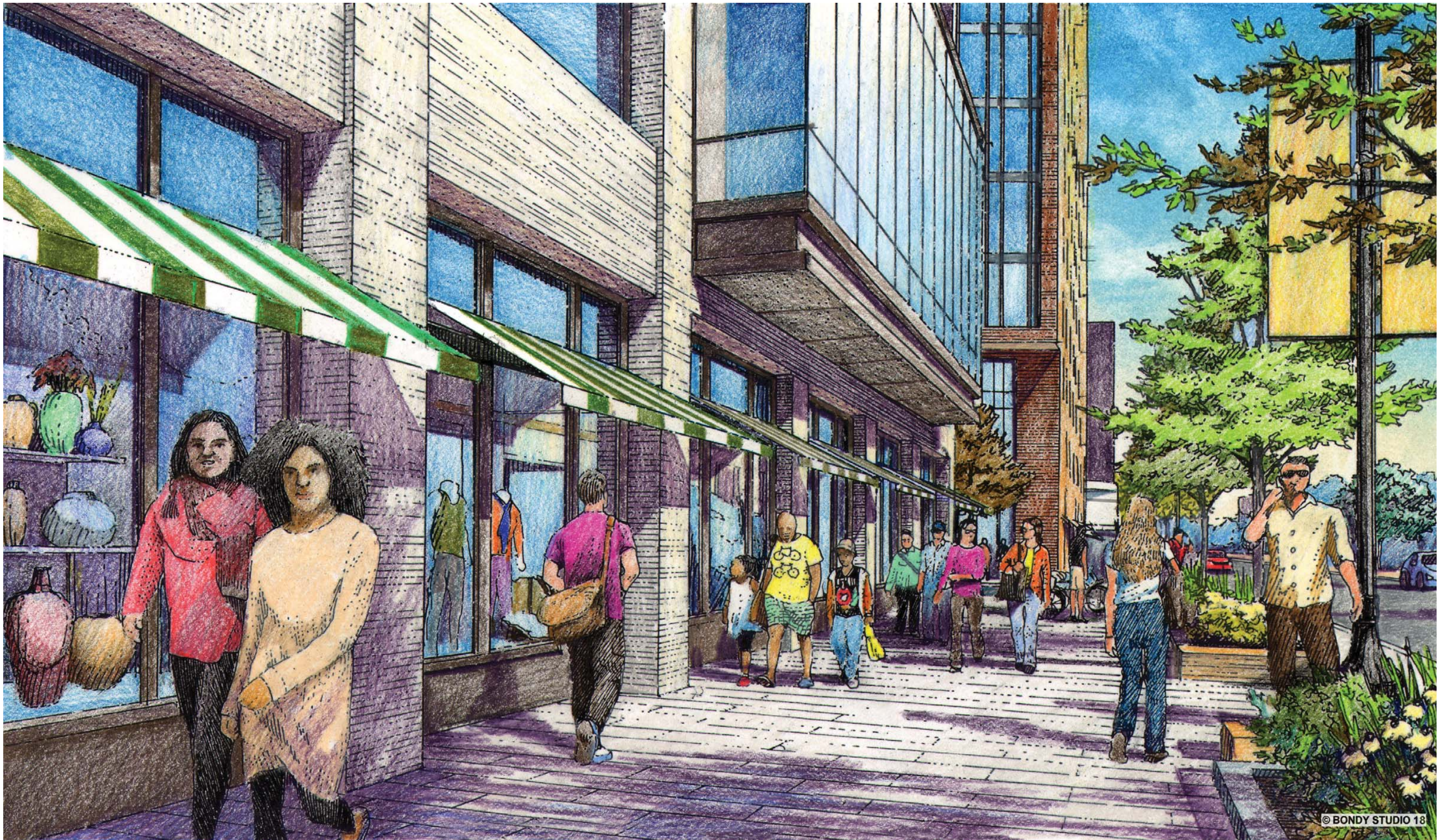
RENDERING - VIEW FROM EVERGREEN LOOKING SOUTH

100-140 W. GRAND RIVER & 341-345 EVERGREEN, EAST LANSING, MI
100 GRAND RIVER LLC / 341 EVERGREEN LLC

06/13/2018

2016029

A-010



© BONDY STUDIO 18



RENDERING - VIEW FROM GRAND RIVER LOOKING EAST

100-140 W. GRAND RIVER & 341-345 EVERGREEN, EAST LANSING, MI
100 GRAND RIVER LLC / 341 EVERGREEN LLC

06/13/2018

2016029

A-011